

**SUBMITTAL DATA: MSY-GE12NA & MUY-GE12NA**

12,000 BTU/H WALL-MOUNTED AIR-CONDITIONING SYSTEMS

Job Name: _____	Location: _____	Date: _____
Purchaser: _____	Engineer: _____	
Submitted to: _____	For <input type="checkbox"/> Reference <input type="checkbox"/> Approval <input type="checkbox"/> Construction	
Unit Designation: _____	Schedule No.: _____	

**GENERAL FEATURES**

- Wall-mounted indoor unit
- Standard Hybrid Catechin Prefilter is included with indoor unit
- Quiet operation
- Choice of fan speeds: Quiet, Low, Medium, High, and Super High; Auto fan speed control also included
- Wireless remote controller is included; PAR-21MAA wired remote controller can be installed as an option
- Indoor unit powered from outdoor unit using A-Control
- Auto restart following a power outage
- Limited warranty: five years on parts and defects and seven years on the compressor

**OPTIONAL ACCESSORIES**
**Outdoor Unit**

- Drain Socket Assembly (MAC-860DS)

**Indoor Unit**

- M-NET Control Adapter (MAC-399IF)
- MA Contact Terminal Interface (MAC-397IF)
- Wired Remote Controller (PAR-21MAA; requires MAC-397IF)
- Condensate Pump (230V; SI3100-230)
- Anti-allergy Enzyme Filter (Two pieces per set; MAC-408FT-E)

**Cooling\***

Rated Capacity . . . . . 12,000 Btu/h  
 Minimum Capacity . . . . . 3,800 Btu/h  
 SEER . . . . . 20.5 Btu/h/W  
 Total Input . . . . . 960 W

\* Rating Conditions (Cooling) - Indoor: 80°F (27°C) DB, 67°F (19°C) WB; Outdoor: 95°F (35°C) DB, 75°F (24°C) WB.

**Electrical Requirements**

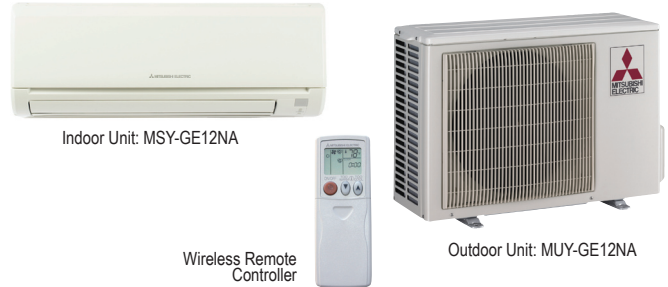
Power Supply . . . . . 208 / 230V, 1-Phase, 60 Hz  
 Breaker Size . . . . . 15 A

**Voltage**

Indoor - Outdoor S1-S2 . . . . . AC 208 / 230V  
 Indoor - Outdoor S2-S3 . . . . . DC 12-24V  
 Indoor - Remote Controller . . . . . Wireless

**OPERATING RANGE**

		Indoor Intake Air Temp.	Outdoor Intake Air Temp.
Cooling	Maximum	90°F (32°C) DB, 73°F (23°C) WB	115°F (46°C) DB
	Minimum	67°F (19°C) DB, 57°F (14°C) WB	14°F (-10°C) DB


**Indoor Unit**

MCA . . . . . 1 A  
 Fan Motor . . . . . 0.76 F.L.A.  
 Airflow (Quiet - Lo - Med - Hi - Super Hi)  
 Cooling . . . . . 145 - 170 - 237 - 321 - 399 Dry CFM  
 109 - 134 - 201 - 286 - 364 Wet CFM

Sound Pressure Level (Quiet - Lo - Med - Hi - Super Hi)  
 Cooling . . . . . 19 - 22 - 30 - 37 - 45 dB(A)

DIMENSIONS	UNIT INCHES / MM
W	31-7/16 / 799
D	9-1/8 / 232
H	11-5/8 / 295

Weight . . . . . 22 lbs. / 10 kg  
 External Finish . . . . . Munsell No. 1.0Y 9.2 / 0.2  
 Field Drainpipe Size O.D. . . . . 5/8" / 15.88 mm  
 Remote Controller . . . . . Wireless  
 (Optional Wired Remote Controller PAR-21MAA;  
 see Data Submittal Sheet)

**Outdoor Unit**

Compressor . . . . . DC Inverter-driven  
 MCA . . . . . 12 A  
 Fan Motor . . . . . 0.50 F.L.A.  
 Sound Pressure Level  
 Cooling . . . . . 49 dB(A)

DIMENSIONS	INCHES / MM
W	31-1/2 / 800
D	11-1/4 / 286
H	21-5/8 / 549

Weight . . . . . 77 lbs. / 35 kg  
 External Finish . . . . . Munsell No. 3Y 7.8 / 1.1

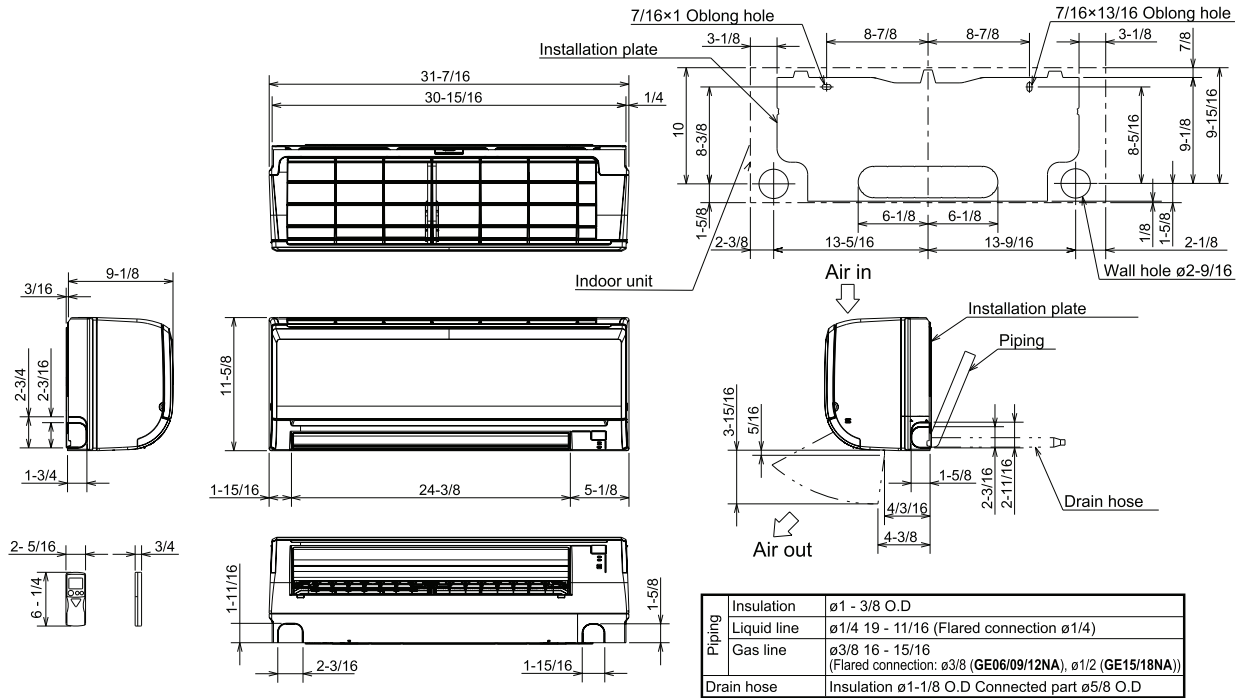
Refrigerant Type . . . . . R410A  
 Refrigerant Pipe Size O.D.  
 Gas Side . . . . . 3/8" / 9.52 mm  
 Liquid Side . . . . . 1/4" / 6.35 mm  
 Max. Refrigerant Pipe Length . . . . . 65 ft. / 20 m  
 Max. Refrigerant Pipe Height Difference . . . . . 40 ft. / 12 m  
 Connection Method . . . . . Flared



# DIMENSIONS: MSY-GE12NA & MUY-GE12NA

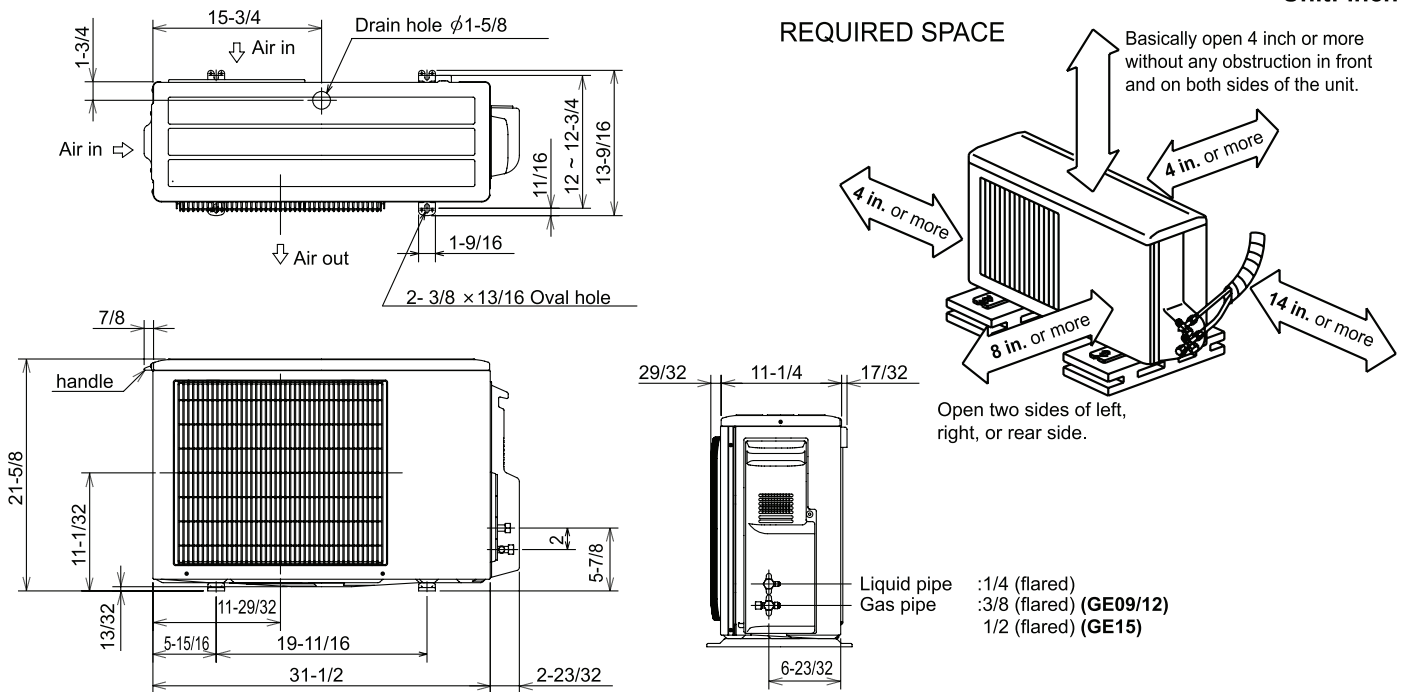
## MSY-GE12NA

Unit: inch



## MUY-GE12NA

Unit: inch



**HVAC Advanced Products Division**  
3400 Lawrenceville Suwanee Rd  
Suwanee, GA 30024  
Tele: 678-376-2900 • Fax: 800-889-9904  
Toll Free: 800-433-4822 (#3)  
www.mehvac.com  
Specifications are subject to change without notice.