

**SUBMITTAL DATA: PCA-A24GA & PUZ-A24NHA**
**24,000 BTU/H CEILING-SUSPENDED HEAT-PUMP SYSTEM**

Job Name: _____	Location: _____	Date: _____
Purchaser: _____	Engineer: _____	
Submitted to: _____	For <input type="checkbox"/> Reference <input type="checkbox"/> Approval <input type="checkbox"/> Construction	
Unit Designation: _____	Schedule No.: _____	

**GENERAL FEATURES**

- Limited warranty: one year on parts and defects and six years on compressor
- Compact outdoor unit
- R410A refrigerant
- Zone control
- Automatic fan speed control
- Quiet operation – both, indoor and outdoor units
- Auto restart following a power outage
- Self check function
- Advanced microprocessor controls
- Auto changeover for cooling and heat

**Cooling**

Rated capacity . . . . .	24,000 Btu/h
Minimum capacity . . . . .	12,000 Btu/h
Total input . . . . .	2500 W
SEER . . . . .	13.4
Power supply . . . . .	208 / 230V, 1 Phase, 60 Hz
Breaker size . . . . .	25 A

**Heating**

Rated capacity . . . . .	26,000 Btu/h
Minimum capacity . . . . .	12,000 Btu/h
Total input . . . . .	2570 W
HSPF (I/V) (Btu/h/W) . . . . .	8.5 / 6.8
COP . . . . .	10.1 Btu/h/W

**Voltage**

Indoor - outdoor S1-S2 . . . . .	AC 208/230V
Indoor - outdoor S2-S3 . . . . .	DC 24V
Indoor - remote controller . . . . .	DC

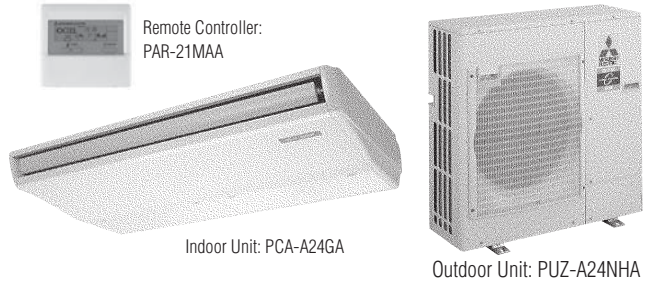
**Indoor unit**

MCA . . . . .	1 A
Fan motor . . . . .	0.53 F.L.A.
Fan motor output . . . . .	70 W
Airflow (Lo-M1-M2-Hi) . . . . .	495-530-565-635 Dry CFM
	445-480-510-570 Wet CFM
Sound (level) (Lo-M1-M2-Hi) . . . . .	37-39-41-43 dB(A)

**DIMENSIONS**

	INCHES	MM
W	51-9/16	1310
D	26-3/4	680
H	8-9/32	210

Weight (lbs/Kg) . . . . .	75 / 34
Field drain pipe size I.D. (inches/mm) . . . . .	1 / 25.4


**Outdoor unit**

Compressor . . . . .	DC inverter/twin rotary
MCA . . . . .	18
Fan motor . . . . .	0.75 F.L.A.
Sound level (heating/cooling) . . . . .	48 / 50 dB(A)

**DIMENSIONS**

	INCHES	MM
W	37-3/8	950
D	13 + 1-3/16	330 + 30
H	37-1/8	943

Weight (lbs/Kg) . . . . .	165 / 75
Refrigerant type . . . . .	R410A
Refrigerant pipe size O.D. (inches/mm)	
gas side . . . . .	5/8 / 15.88
liquid side . . . . .	3/8 / 9.52
Max. refrigerant pipe length (ft/m) . . . . .	165 / 50
Max. refrigerant pipe height difference (ft/m) . . . . .	100 / 30
Connection method . . . . .	flared

**NOTES :**

- \*1. Rating conditions (cooling)-indoor : D.B. 80°F, W.B. 67°F  
 outdoor : D.B. 95°F, W.B. 75°F.
- \*2. Rating conditions (heating)-indoor : D.B. 70°F, W.B. 60°F outdoor : D.B. 17°F, W.B. 15°F.

**Operating range**

		Indoor intake air temp.	Outdoor intake air temp.
Cooling	Maximum	D.B. 95°F, W.B. 71°F	D.B. 115°F
	Minimum	D.B. 67°F, W.B. 57°F	D.B. 0°F *
Heating	Maximum	D.B. 80°F, W.B. 67°F	D.B. 70°F, W.B. 59°F
	Minimum	D.B. 70°F, W.B. 60°F	D.B. 12°F, W.B. 10°F

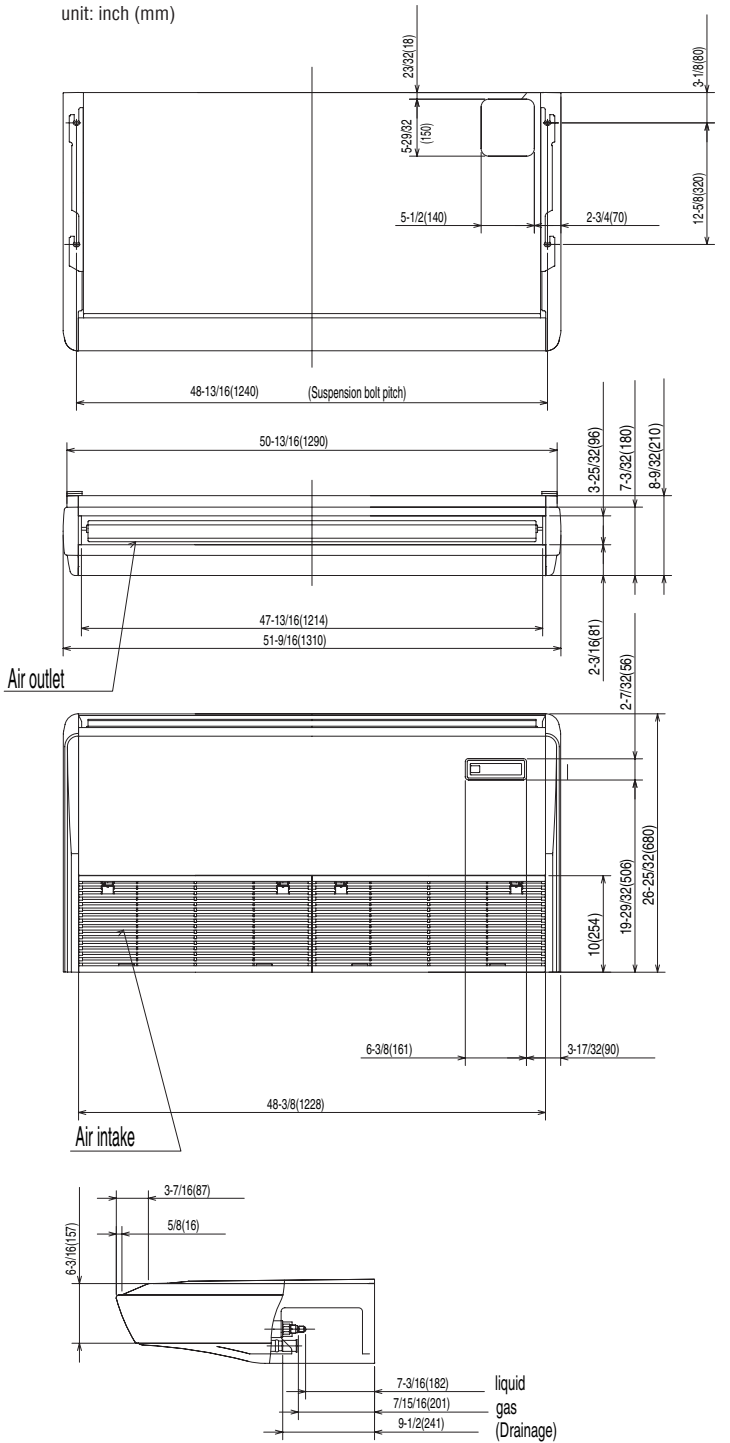
\* With wind baffle installed. If not installed, the minimum rated temperature is 23°FDB.



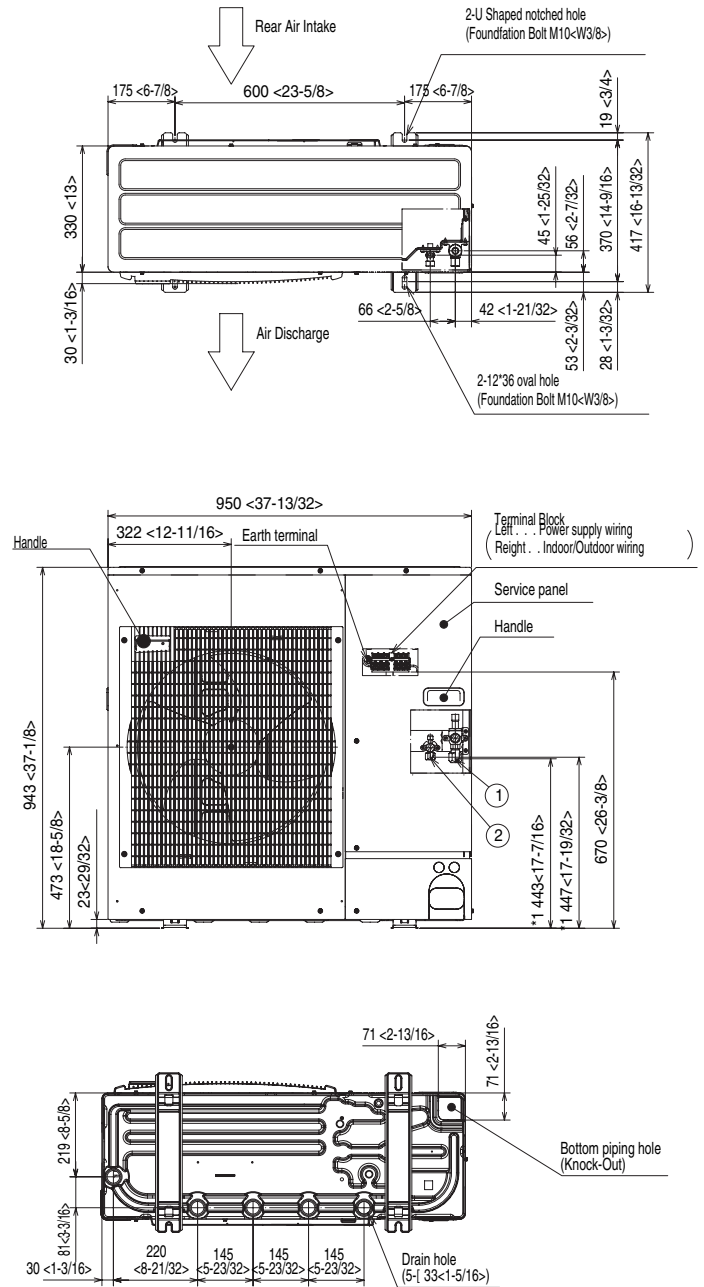
Notes:

# DIMENSIONS: PCA-A24GA & PUZ-A24NHA

unit: inch (mm)



unit: mm <inches>



HVAC Advanced Products Division  
Mitsubishi Electric & Electronics USA, Inc.

3400 Lawrenceville Suwanee Rd  
Suwanee, GA 30024  
Tele: 678-376-2900 • Fax: 800-889-9904  
Toll Free: 800-433-4822 (#3)  
www.mehvac.com