

# Submittal Data Sheet

## BRC073A6 – Wired Remote Controller

Project Name: _____	Approval: _____
Location: _____	Date: _____
Engineer: _____	Construction: _____
Submitted to: _____	Unit #: _____
Submitted by: _____	Drawing #: _____
Reference: _____	

### MODEL COMPATIBILITY:

Compatible with Single-Zone and Multi-Zone indoor unit models: CTXS, FTK\_N, FTX\_N, FTX\_U, FTX\_W, FTXR, FTXS, FTXM, FVXS, FTXQ, FTXV, FTXF\_B, FTKF\_B, CTXV.

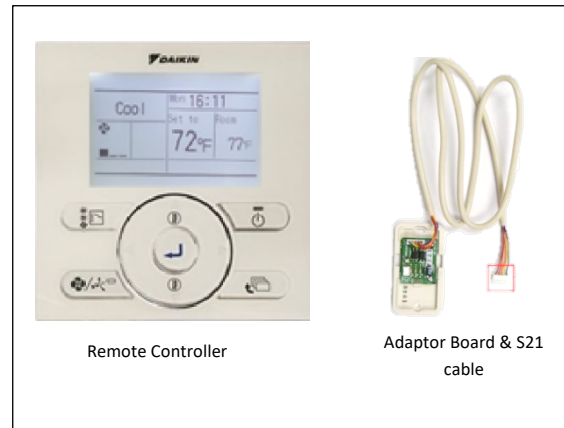
The following indoor units do not have the S21 connection and require an additional interface adaptor (ordered separately):

Indoor Unit Models	Required Interface Adaptor
FTX09NMVJU(A), FTX12NMVJU(A), FTX09WMVJU9, FTX12WMVJU9, FTXQ09ASBU9, FTXQ12ASBU9, CTXV07AVJU9, FTXV09AVJU9, FTXV12AVJU9, FTXV15AVJU9, FTXV18AVJU9, FTXV24AVJU9, FTKF09BVJU9, FTKF12BVJU9, FTKF18BVJU9, FTKF24BVJU9, FTXF09BVJU9, FTXF12BVJU9, FTXF18BVJU9, FTXF24BVJU9, CTX09AVJU9, CTX12AVJU9	KRP067A41E
FTX15NMVJU(A), FTX15WMVJU9, FTX24NMVJU	KRP980B2E
FTXM09VVJU, FTXM12VVJU, FTXM18VVJU, FTXM24VVJU, FTXM09WVJU9, FTXM12WVJU9, FTXM18WVJU9, FTXM24WVJU9	KER087A41

### SPECIFICATIONS:

<b>Model</b>	BRC073A6*
<b>Description</b>	Wired Remote Controller
<b>Maximum Indoor Units</b>	1
<b>Dimensions</b>	4.75 in x 4.75 in x 0.75 in (120mm x 120mm x 19 mm)
<b>Communication Protocol</b>	Daikin proprietary S21 protocol
<b>Operating Temp Range</b>	14 to 122°F (-10 to 50°C)
<b>Operating Humidity Range</b>	75% or less (RH) (without condensation)
<b>Comfort Setpoint Range</b>	Cool (64°F – 90°F) / Heat (50°F – 86°F) / Auto (64°F – 86°F)
<b>Operation</b>	Start / Stop
	Mode (Auto/Heat/Cool/Dry/Fan)
	Set Temperature Setpoint
	Fan Speed
	Airflow Direction
	Setback
<b>Scheduling</b>	One-time Timer
	Daily Timer
	Schedule Timer

### PRODUCT IMAGE:



\* To connect the remote controller, additional wire is required. Choose from these optional wiring numbers:

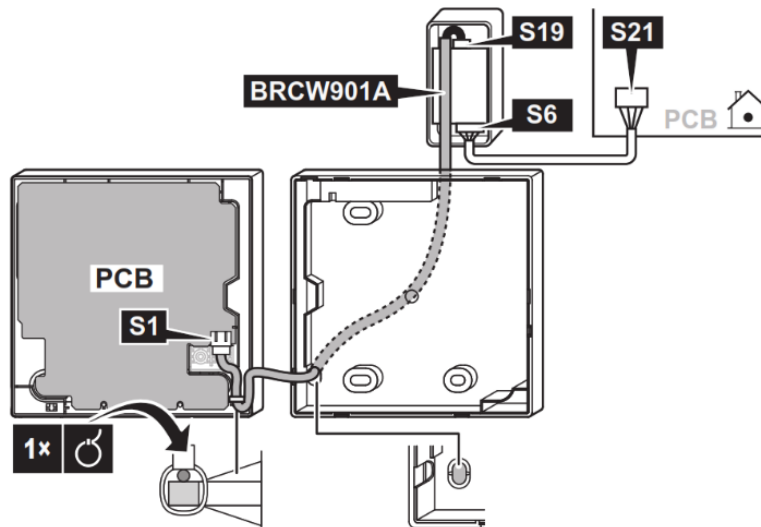
- BRCW901A03: Non-plenum rated, 10ft.
- BRCW901A08: Non-plenum rated, 26ft.
- DACA-BRCW901P10: Plenum rated, 10ft.
- DACA-BRCW901P25: Plenum rated, 25ft.

Project Name:	Approval:
Location:	Date:
Engineer:	Construction:
Submitted to:	Unit #:
Submitted by:	Drawing #:
Reference:	

### FEATURES:

- Set temperature setpoint in °F or °C units
- Display of Temperature and Setpoint in 1°F / °C increments
- Backlit LCDs in English, Spanish, or French
- Two configurable display options: Detailed and Standard
- Dual setpoints (independent cooling and heating setpoints) with setpoint auto reset function
- Setpoint range limit for cooling, heating, and auto modes
- Space Temperature sensing & control via the indoor unit return air temperature sensor
- Independent cooling and heating setback setpoints (unoccupied period)
- Airflow – Individual air flow direction (Up-Down-Right-Left – Swing- Stop)
- 3 independent 7-day schedules
  - Up to 5 actions per day
  - Independent cooling and heating or setback setpoints
  - Supports copy and paste events and holidays
  - Automatic adjustment for Daylight Saving Time (DST)
- Backup power supply for clock/calendar retains programmed settings during short-term power loss
- Real-time monitoring of system malfunctions with immediate display of the unit in error and the error code
- Controller buttons can be selectively locked out to prevent use
- Operation modes can be restricted to provide only the desired mode(s) of operation
- Auto off timer configurable in 10-minute increments (range 30-180 minutes)
- Backwards compatible replacement for earlier controllers.

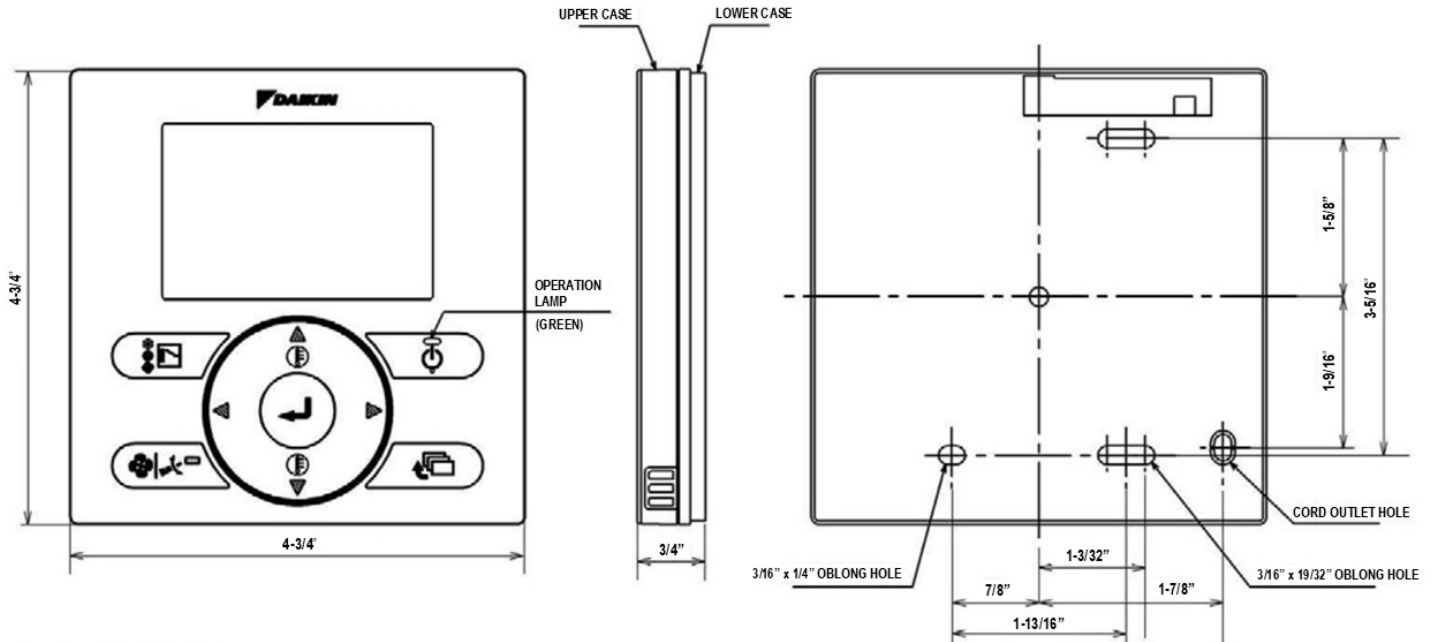
### WIRING DIAGRAM:



Project Name: \_\_\_\_\_  
 Location: \_\_\_\_\_  
 Engineer: \_\_\_\_\_  
 Submitted to: \_\_\_\_\_  
 Submitted by: \_\_\_\_\_  
 Reference: \_\_\_\_\_

Approval: \_\_\_\_\_  
 Date: \_\_\_\_\_  
 Construction: \_\_\_\_\_  
 Unit #: \_\_\_\_\_  
 Drawing #: \_\_\_\_\_

### DIMENSIONS:



### DOCUMENTATION:

Documentation available on [www.daikincity.com](http://www.daikincity.com) and/or [www.daikincomfort.com](http://www.daikincomfort.com):

- Submittal Data Sheet
- Installation Manual
- Operation Manual