



Submittal Data Sheet

R-32 2.0 ton Ducted Concealed Heat Pump SkyAir System

FBA24AAVJU-RZA24AAVJU

BENEFITS

- Medium external static pressure (ESP) capabilities offer up to 0.8" W.G.
- Connect to Daikin Zoning Kit (Optional)
- Dependable heat pump operation from -4°F in heating to 122°F in cooling
- DC Fan Motor
- Minimal Discharge Air Temperature - mitigate risk of condensation
- Auto Adjusting Airflow at commissioning based on external static pressure
- Ease of Maintenance with complete service access from below
- Built in Refrigerant Detection System with Dispersion Mode

INDOOR UNIT



OUTDOOR UNIT





Submittal Data Sheet

R-32 2.0 ton Ducted Concealed Heat Pump SkyAir System

FBA24AAVJU-RZA24AAVJU

SYSTEM PERFORMANCE

Indoor Unit Model No.	FBA24AAVJU	Indoor Unit Name:	R-32 2.0 TON HSP DUCTED CONCEALED
Outdoor Unit Model No.	RZA24AAVJU	Outdoor Unit Name:	R-32 SkyAir 2.0 T Heat Pump Single Zone
Rated Cooling Capacity (Btu/hr):	24,000	Rated Cooling Conditions:	Indoor (°F DB/WB): 80 / 67 Ambient (°F DB/WB): 95 / 75
Sensible Capacity (Btu/hr):	18,700	Rated Piping Length(ft):	25
Max/Min Cooling Capacity (Btu/hr):	/	Rated Height Difference (ft):	0.00
Cooling Input Power (kW):	2.120		
SEER2 (Non-Ducted/Ducted):	/ 16.20	HSPF2 (Non-Ducted/Ducted):	/ 9.3
EER2 (Non-Ducted/Ducted):	/ 11.70		
Rated Heating Capacity (Btu/hr):	27,000	Rated Heating Conditions:	Indoor (°F DB/WB): 70 / 60 Ambient (°F DB/WB): 47 / 43

SYSTEM DETAILS

Refrigerant Type:	R-32	Cooling Operation Range (°F DB):	23 - 122
Holding Refrigerant Charge (lbs):	7.5	Heating Operation Range (°F WB):	-4 - 60
Additional Charge (oz/ft):	0.04	Max. Pipe Length (Vertical) (ft):	98
Pre-charge Piping (Length) (ft):	25	Cooling Range w/Baffle (°F DB):	23 - 122
Max. Pipe Length (Total) (ft):	230		
Max Height Separation (Ind to Ind ft):	0		

Submittal Data Sheet

R-32 2.0 ton Ducted Concealed Heat Pump SkyAir System

FBA24AAVJU-RZA24AAVJU

INDOOR UNIT DETAILS

Power Supply (V/Hz/Ph):	208-230 / 60 / 1	Airflow Rate (H/M/L) (CFM):	742/635/565
Power Supply Connections:	T1, T2	Moisture Removal (Gal/hr):	
Min. Circuit Amps MCA (A):	1.9	Gas Pipe Connection (inch):	5/8
Max Overcurrent Protection (MOP) (A):	15	Liquid Pipe Connection (inch):	3/8
Dimensions (HxWxD) (in):	9-11/16 x 39-3/8 x 31-1/2	Condensate Connection (inch):	1-1/4
Ext. Static Pressure (Rated/Max) (inWg):	/	Sound Pressure (H/M/L) (dBA):	39/35/33
Net Weight (lb):	84	Sound Power Level (dBA):	

DIMENSIONAL DRAWING - INDOOR UNIT

Unit: in. (mm)

Notes:

- Location of name plate: control box cover
- Make sure to mount an air filter inside air passage of the suction side. (Select dust collection efficiency (gravimetric method) 50% or more.)
- If the temperature and humidity in the ceiling is likely to exceed 86° F (30°C) and RH80%, reinforce thermal insulation by applying additional insulation materials such as glass wool or polyethylene that have thickness of 3/8(10) or more.
- Do not put anything that should not get wet under the indoor unit. Dew may drop when humidity reaches over 80%, drain gets stuck or air filter is clogged.
- Space for service works
 - Provide service space for service work such as check and maintenance of the control box and drain pump by one of the following ways.
 - Inspection hatch 1 and 2 (17-3/4 x 17-3/4) (450x450) (Fig. A-1) and a space of 11-13/16(300mm) or more under the unit. (View A)
 - Inspection hatch 2 is not needed when there is a space for service work under the unit.
 - Inspection hatch 3 under the unit and control box. (View B-2)
 - Provide enough space for maintenance and mount the drain pan and control box.
 - Check the drawing of optional accessories when mounting optional accessories such as filter chamber.

Fig. A

Fig. A-1

View B-1

View B-2

Z View
(From the air outlet)

Z View
(From the air inlet)

ITEM	PART NAME	REMARK
13	Drain socket	
12	Drain hose (Accessory)	
11	Socket (for maintenance)	Ø 3.0 φ1" (φ25)
10	Hanger bracket	For W8-W10 or equivalent
9	Air suction flange	
8	Air discharge flange	
7	Power supply wiring connection	
6	Transmission and remote controller wiring connection	
5	Control box (inside)	M4
4	Ground terminal (Control box)	M4
3	Drain pipe connection	Ø 3.0 φ1-1/4" (φ32)
2	Gas pipe connection	Ø 5/8" (Ø 15.9) Flare connection
1	Liquid pipe connection	Ø 3/8" (Ø 9.5) Flare connection

Submittal Data Sheet

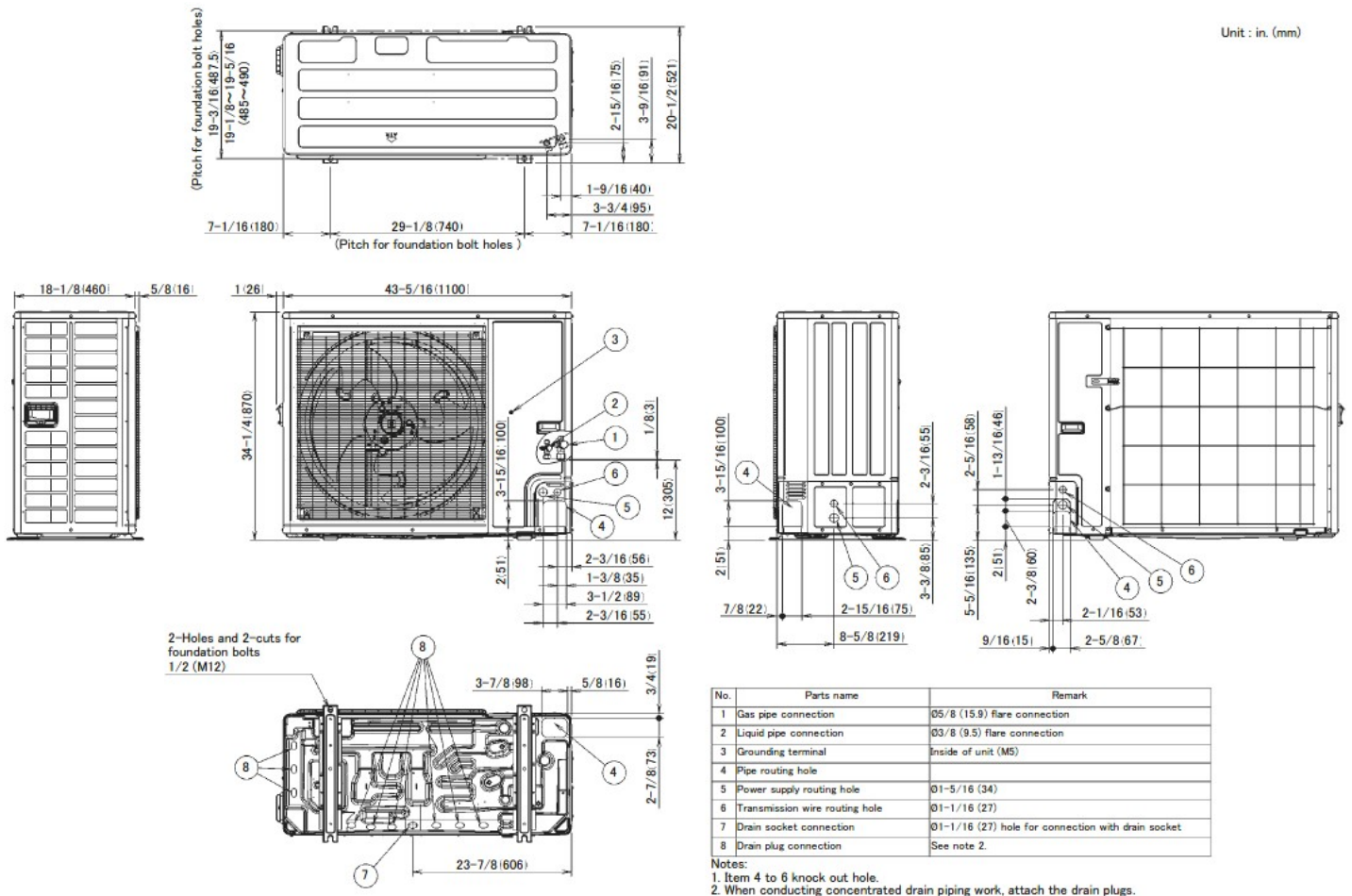
R-32 2.0 ton Ducted Concealed Heat Pump SkyAir System

FBA24AAVJU-RZA24AAVJU

OUTDOOR UNIT DETAILS

Power Supply (V/Hz/Ph):	208-230 / 60 / 1	Compressor Stage:	Inverter
Power Supply Connections:	H1, H2	Capacity Control Range (%):	-
Min. Circuit Amps MCA (A):	19.8	Airflow Rate (H) (CFM):	3000
Max Overcurrent Protection (MOP) (A):	20	Gas Pipe Connection (inch):	5/8
Max Starting Current MSC(A):		Liquid Pipe Connection (inch):	3/8
Rated Load Amps RLA(A):		Sound Pressure (H) (dBA):	56
Dimensions (HxWxD) (in):	34-1/4 x 43-5/16 x 18-1/8	Sound Power Level (dBA):	
Net Weight (lb):	234		

DIMENSIONAL DRAWING - OUTDOOR UNIT





Submittal Data Sheet

R-32 2.0 ton Ducted Concealed Heat Pump SkyAir System

FBA24AAVJU-RZA24AAVJU

INDOOR ACCESSORIES

PART NUMBER	DESCRIPTION	INCLUDED
-------------	-------------	----------

BRC1NRV71	R32 Navigation Remote Controller	No
-----------	----------------------------------	----

BRP9A73	Ventilation and alarm adapter	No
---------	-------------------------------	----

DACA-CP3-1	Si-30 Condensate Pump	No
------------	-----------------------	----

KRCS01-6B	Remote Sensor	No
-----------	---------------	----

KRP1C76	Wiring Adapter PCB	No
---------	--------------------	----

KRP4A71	Group Control Adaptor PCB	No
---------	---------------------------	----

KRP4A98	Mounting plate for accessory PCB	No
---------	----------------------------------	----

OUTDOOR ACCESSORIES

PART NUMBER	DESCRIPTION	INCLUDED
-------------	-------------	----------

BRP2A82	ABC Terminal for VRV IV S	No
---------	---------------------------	----

KEH042A41A	Drain Pan heater for single phase VRVs and SkyAir	No
------------	---	----

KPW082A41	Air direction adjustment grille	No
-----------	---------------------------------	----

KRC19-26A6	COOL/HEAT SELECTOR	No
------------	--------------------	----