



Submittal Data Sheet

R-32 Daikin Aurora 2 Ton Ducted Concealed Heat Pump System
FDMA24AVJU9RXP24AVJU9

FEATURES

- Automatic defrosting & Automatic cooling/heating change over
- Auto Restart after Power failure
- Operation Range—Cooling (50°F - 114.8°F)
- Low temperature cooling operation down to -4°F (-20°C) with wind baffle and field settings
- Operating Range - Heating (-13.8°F - 64.4°F)
- 12-year limited parts and compressor warranty with online registration
- 5-year limited parts warranty for commercial applications
- Inverter controlled Swing compressor with Reluctance DC motor
- Auto Fan Speed
- 3-Step Switchable Fan speed
- Quick Warming function
- Program dry operation
- Fan-only mode
- ECONO operation
- Titanium Apatite deodorizing filter
- Filter Cleaning Indicator
- Anti-corrosion treatment on outdoor heat exchanger
- Factory charged for up to 49.2 ft of piping length
- Built in refrigeration detection system

BENEFITS

- Inverter and PAM control technologies optimize energy use, delivering efficient performance and reduced electricity consumption
- Concealed systems preserve interior aesthetics by eliminating bulky wall-mounted unit ideal for minimalist and design-focused homes
- Concealed ducted mini splits offer zoned comfort with minimal ductwork, preserving the architectural integrity of historic homes
- Concealed ducted systems efficiently condition large or multi-room spaces using flexible ductwork, offering seamless comfort without multiple wall units
- Compact concealed systems deliver efficient, quiet comfort in small apartments without occupying valuable walls or floor space
- Flexible installation options—either-side drain, and factory charged for up to 49.2 ft. of piping length —simplify setup and reduce labor costs
- Concealed systems maintain visual harmony by delivering discreet comfort without distracting from high-end displays or artwork.
- Concealed systems deliver efficient climate control while preserving a clean, professional look free from exposed HVAC components
- Concealed ducted mini-splits offer a space-saving, energy-efficient solution for individual climate control in apartments and condominiums
- Concealed systems provide quiet, zoned climate control with advanced filtration—ideal for maintaining comfort and air quality in hospitals and hotels

INDOOR UNIT



OUTDOOR UNIT





Submittal Data Sheet

R-32 Daikin Aurora 2 Ton Ducted Concealed Heat Pump System

FDMA24AVJU9RXP24AVJU9

SYSTEM PERFORMANCE

| | | | |
|------------------------------------|----------------|----------------------------------|---|
| Indoor Unit Model No. | FDMA24AVJU9 | Indoor Unit Name: | R-32 2 Ton Ducted Concealed Indoor Unit |
| Outdoor Unit Model No. | RXP24AVJU9 | Outdoor Unit Name: | Daikin Aurora R-32 2 Ton Heat pump outdoor unit |
| Rated Cooling Capacity (Btu/hr): | 21,800 | Rated Cooling Conditions: | Indoor (°F DB/WB): 80 / 67 Ambient (°F DB/WB): 95 / 75 |
| Sensible Capacity (Btu/hr): | 15,740 | Rated Piping Length(ft): | 25 |
| Max/Min Cooling Capacity (Btu/hr): | 23,000 / 9,000 | Rated Height Difference (ft): | 0.00 |
| Cooling Input Power (kW): | 2.210 | Heating Input Power (kW): | 2.79 |
| SEER2 (Non-Ducted/Ducted): | / 18.30 | HSPF2 (Non-Ducted/Ducted): | / 9.2 |
| EER2 (Non-Ducted/Ducted): | / 10.30 | Heating COP (Non-Ducted/Ducted): | 3.0 / |
| Rated Heating Capacity (Btu/hr): | 24,000 | Rated Heating Conditions: | Indoor (°F DB/WB): 70 / 60 Ambient (°F DB/WB): 47 / 43 |
| Max/Min Heating Capacity (Btu/hr): | 27,600 / 9,000 | | |

SYSTEM DETAILS

| | | | |
|--|------|-----------------------------------|----------|
| Refrigerant Type: | R-32 | Cooling Operation Range (°F DB): | 50 - 115 |
| Holding Refrigerant Charge (lbs): | 3.04 | Heating Operation Range (°F WB): | -14 - 64 |
| Additional Charge (oz/ft): | 0.22 | Max. Pipe Length (Vertical) (ft): | 66 |
| Pre-charge Piping (Length) (ft): | 49 | Cooling Range w/Baffle (°F DB): | -4 - 115 |
| Max. Pipe Length (Total) (ft): | 99 | | |
| Max Height Separation (Ind to Ind ft): | 0 | | |

Submittal Data Sheet

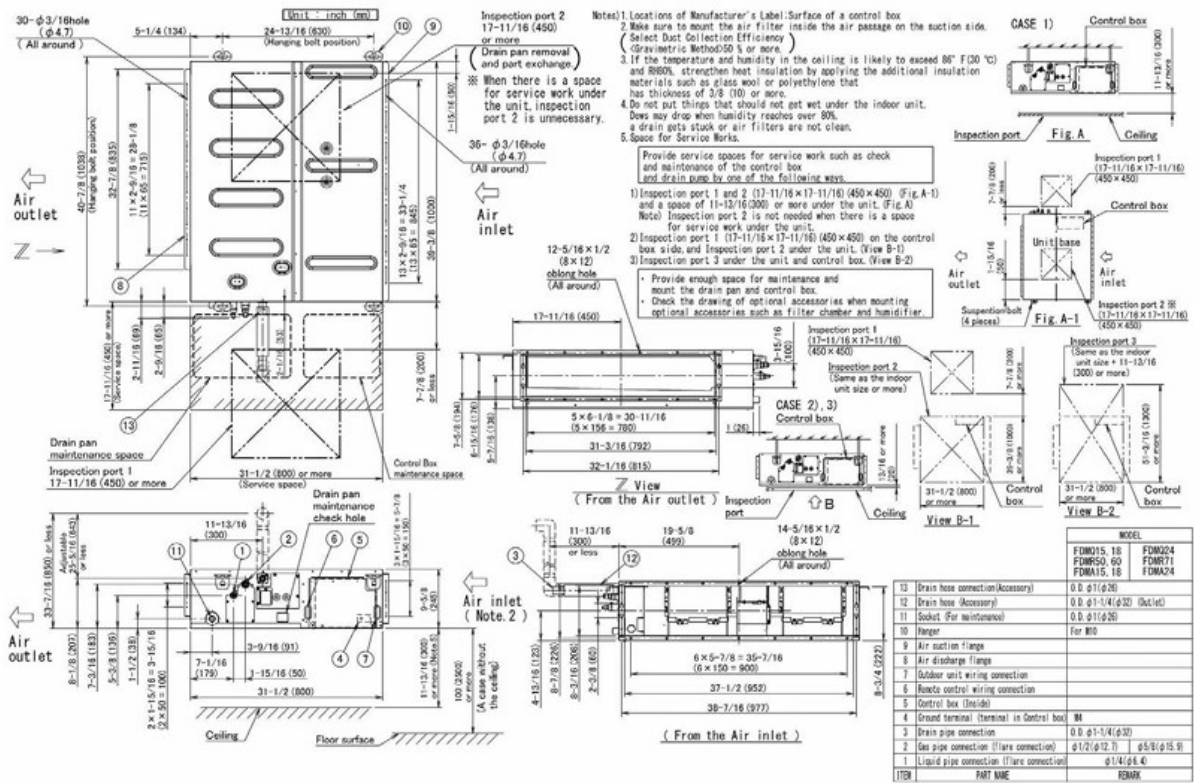
R-32 Daikin Aurora 2 Ton Ducted Concealed Heat Pump System
FDMA24AVJU9RXP24AVJU9

INDOOR UNIT DETAILS

| | | | |
|--|-------------------------|--------------------------------|-------------|
| Power Supply (V/Hz/Ph): | 208-230 / 60 / 1 | Airflow Rate (H/M/L) (CFM): | 666/553/426 |
| Power Supply Connections: | | Moisture Removal (Gal/hr): | |
| Min. Circuit Amps MCA (A): | | Gas Pipe Connection (inch): | 5/8 |
| Max Overcurrent Protection (MOP) (A): | | Liquid Pipe Connection (inch): | 1/4 |
| Dimensions (HxWxD) (in): | 9-5/8 x 39-3/8 x 31-1/2 | Condensate Connection (inch): | 1 |
| Net Weight (lb): | 88 | Sound Pressure (H) (dBA): | 40 |
| Ext. Static Pressure (Rated/Max) (inWg): | 0.2 / | Sound Power Level (dBA): | |

DIMENSIONAL DRAWING - INDOOR UNIT

FDMA15/18/24AVJU9



3D112919C



Submittal Data Sheet

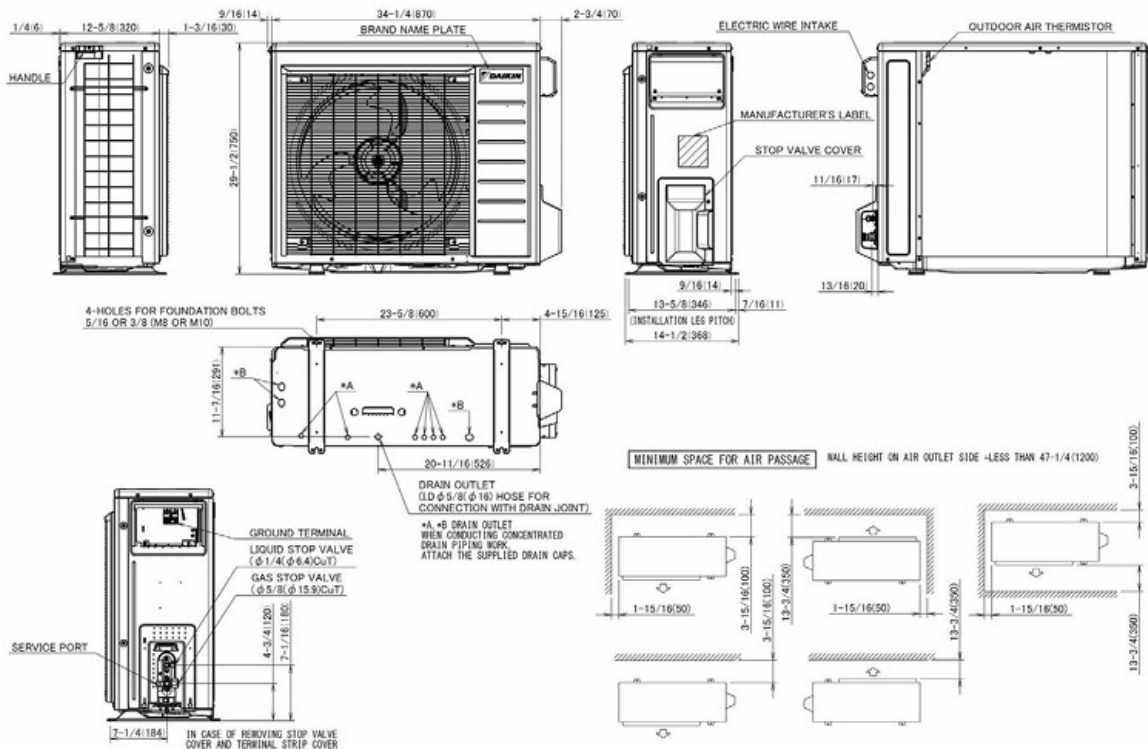
R-32 Daikin Aurora 2 Ton Ducted Concealed Heat Pump System
FDMA24AVJU9RXP24AVJU9

OUTDOOR UNIT DETAILS

| | | | |
|---------------------------------------|--------------------------|--------------------------------|----------|
| Power Supply (V/Hz/Ph): | 208/230 / 60 / 1 | Compressor Stage: | Inverter |
| Power Supply Connections: | | Capacity Control Range (%): | - |
| Min. Circuit Amps MCA (A): | 21.6 | Airflow Rate (H/M) (CFM): | /2,383 |
| Max Overcurrent Protection (MOP) (A): | 25 | Gas Pipe Connection (inch): | 5/8 |
| Max Starting Current MSC(A): | | Liquid Pipe Connection (inch): | 1/4 |
| Rated Load Amps RLA(A): | | Sound Pressure (H) (dBA): | 55 |
| Dimensions (HxWxD) (in): | 29-1/2 x 34-1/4 x 12-5/8 | Sound Power Level (dBA): | |
| Net Weight (lb): | 127 | | |

DIMENSIONAL DRAWING - OUTDOOR UNIT

RXP24AVJU9



3D150943



Submittal Data Sheet

R-32 Daikin Aurora 2 Ton Ducted Concealed Heat Pump System

FDMA24AVJU9RXP24AVJU9

INDOOR ACCESSORIES

| PART NUMBER | DESCRIPTION | INCLUDED |
|-------------|-------------|----------|
|-------------|-------------|----------|

| | | |
|------------|----------------------------------|----|
| BRC1NRV71 | R32 Navigation Remote Controller | No |
| DCS302C71 | Centralized Controller | No |
| DST301BA61 | Schedule Timer | No |
| KRCS01-6B | Remote Sensor | No |
| KRP1C76 | Wiring Adapter PCB | No |

OUTDOOR ACCESSORIES

| PART NUMBER | DESCRIPTION | INCLUDED |
|-------------|-------------|----------|
|-------------|-------------|----------|

| | | |
|-----------|---|-----|
| KEH064A41 | Drain Pan Heater | No |
| KKG063A44 | Back Protection Wire Net | No |
| KKP937A4 | Drain Plug for OD Unit | Yes |
| KPS063A41 | Snow hood (intake side plate) (15, 18 & 24) | No |
| KPS063A44 | Snow hood (intake rear plate) (15, 18 & 24) | No |
| KPS063A47 | Snow hood (outlet) (15, 18 & 24) | No |
| KPW063B4 | Air direction adjustment grille | No |