



Submittal Data Sheet
 1-Ton Duct Concealed and Heat Pump
 FDMQ12WVJU9RX12WMVJU9

Model	Indoor Unit		FDMQ12WVJU9	
	Outdoor Unit		RX12WMVJU9	
			Cooling	Heating
Power Supply		1 ϕ , 208 - 230 V, 60 Hz		
Capacity Rated (Min. - Max.)	Btu/h	10,800 (4,000 - 12,400)	13,600 (3,900 - 14,200)	
Running Current (Rated)	A	6.14 - 5.55	6.48 - 5.86	
Power Consumption (Rated)	W	1,227 - 1,227	1,329 - 1,329	
Power Factor (Rated)	%	96.1 - 96.2	98.6 - 98.6	
SEER2 / HSPF2		14.60	8.10	
EER2 (Rated)	Btu/h·W	8.80	—	
COP2 (Rated)	W/W	—	3.00	
Piping Connections	Liquid	in. (mm)	ϕ 1/4 (6.4)	
	Gas	in. (mm)	ϕ 3/8 (9.5)	
	Drain	in. (mm)	I.D. ϕ 1 (25) / O.D. ϕ 1-1/4 (32)	
Heat Insulation		Both Liquid and Gas Pipes		
Max. Interunit Piping Length	ft (m)	65-5/8 (20)		
Max. Interunit Height Difference	ft (m)	49-1/4 (15)		
Chargeless	ft (m)	32-3/4 (10)		
Amount of Additional Charge of Refrigerant	oz/ft (g/m)	0.21 (20)		
Indoor Unit		FDMQ12WVJU9		
Heat Exchanger	Rows \times Stages, Fin per Inch	3 \times 26, 18		
	Fin Spec / Tube	Multi Slit Fin / ϕ 5 Hi-XA Tube		
Airflow Rate	H / M / L	cfm	371 / 318 / 261	371 / 318 / 261
		m3/min	10.5 / 9.0 / 7.4	10.5 / 9.0 / 7.4
Fan Motor	H / M / L	rpm	1,089 / 930 / 771	1,089 / 930 / 771
	Motor Output	HP	0.17	
Fan	Type	Sirocco Fan		
External Static Pressure	inH2O	Standard 0.20 (0.60 - 0.12)		
	Pa	Standard 50 (150 - 30)		
Running Current (Rated)	A	0.44 - 0.40	0.44 - 0.40	
Power Consumption (Rated)	W	89 - 89	89 - 89	
Power Factor (Rated)	%	97.0 - 97.6	97.0 - 97.6	

Daikin Comfort Technologies North America, Inc 19001 Kermier Rd Waller TX 77484
 Daikin City Generated Submittal Data www.daikincomfort.com or www.daikinac.com

(Daikin's products are subject to continuous improvements. Daikin reserves the right to modify product design, specifications, and information in this data sheet without notice and without incurring any obligations)



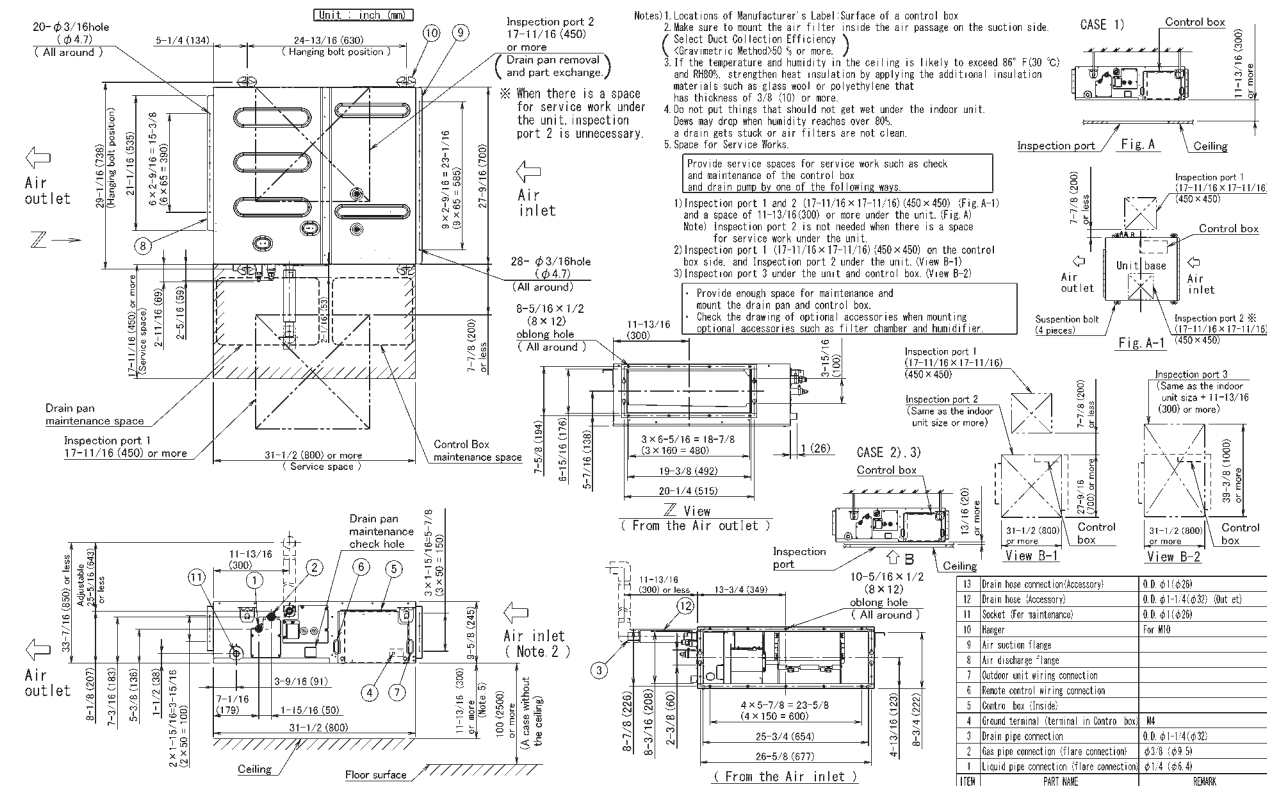
Submittal Data Sheet
 1-Ton Duct Concealed and Heat Pump
 FDMQ12WVJU9RX12WMVJU9

Temperature Control			Microcomputer Control	
Dimensions (H × W × D)		in. (mm)	9-5/8 × 27-9/16 × 31-1/2 (245 × 700 × 800)	
Weight (Mass)		lbs (kg)	64 (29)	
Sound Pressure Level		dB(A)	33	33
Remote Controller (Option)		Wired	BRC1E73	
		Wireless	BRC082A43	
Outdoor Unit			RX12WMVJU9	
Casing Color			Ivory White	
Heat Exchanger		Fin Spec / Tube		
		Waffle Fin (PE) / φ 7 Hi-XSL Tube		
Fan Motor		Motor Output	HP	0.03
Compressor		Type		
		Hermetically Sealed Swing Type		
		Model		
		1YC23AUXD		
Refrigerant Oil		Type		
		FVC50K		
		Charge	oz (L)	12.68 (0.375)
Refrigerant		Type		
		R-410A		
		Charge	lbs (kg)	2.09 (0.95)
Airflow Rate		cfm (m3/min)	1,105 (31.3)	1,144 (32.4)
Fan		Type		
		Propeller		
Running Current (Rated)		A	5.70 - 5.15	6.04 - 5.46
Power Consumption (Rated)		W	1,138 - 1,138	1,240 - 1,240
Power Factor (Rated)		%	96.0 - 96.1	98.7 - 98.7
Dimensions (H × W × D)		in. (mm)	21-5/8 × 26-9/16 × 11-3/16 (550 × 675 × 284)	
Weight (Mass)		lbs (kg)	63 (29)	
Sound Pressure Level		dB(A)	49	51
Conditions Based on	Indoor		80.0°FDB (26.7°CDB) / 67.0°FWB (19.4°CWB)	70.0°FDB (21.1°CDB) / 60.0°FWB (15.6°CWB)
	Outdoor		95.0°FDB (35.0°CDB) / 75.0°FWB (24.0°CWB)	47.0°FDB (8.3°CDB) / 43.0°FWB (6.1°CWB)
	Piping Length		25 ft (7.5 m)	

Daikin Comfort Technologies North America, Inc 19001 Kermier Rd Waller TX 77484
 Daikin City Generated Submittal Data www.daikincomfort.com or www.daikinac.com

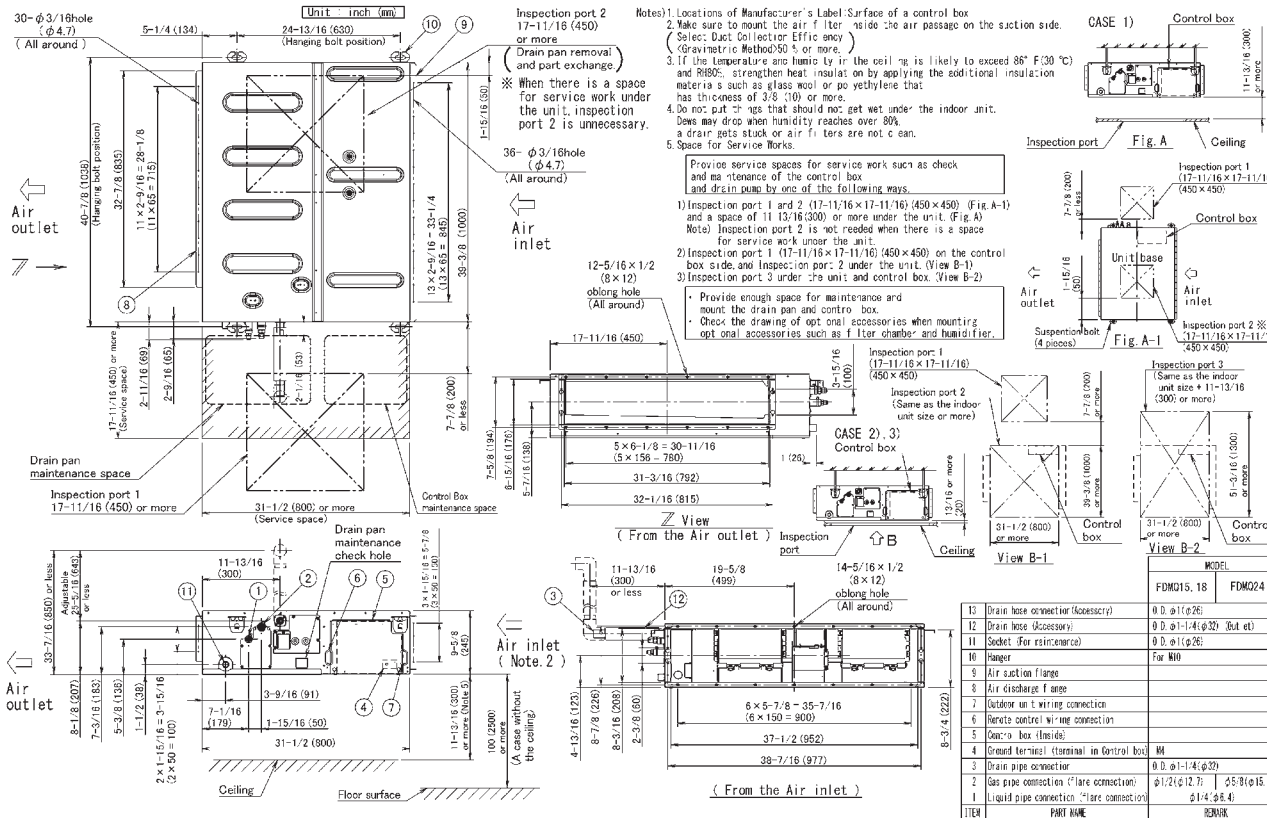
(Daikin's products are subject to continuous improvements. Daikin reserves the right to modify product design, specifications, and information in this data sheet without notice and without incurring any obligations)

FDMQ09/12WVJU9



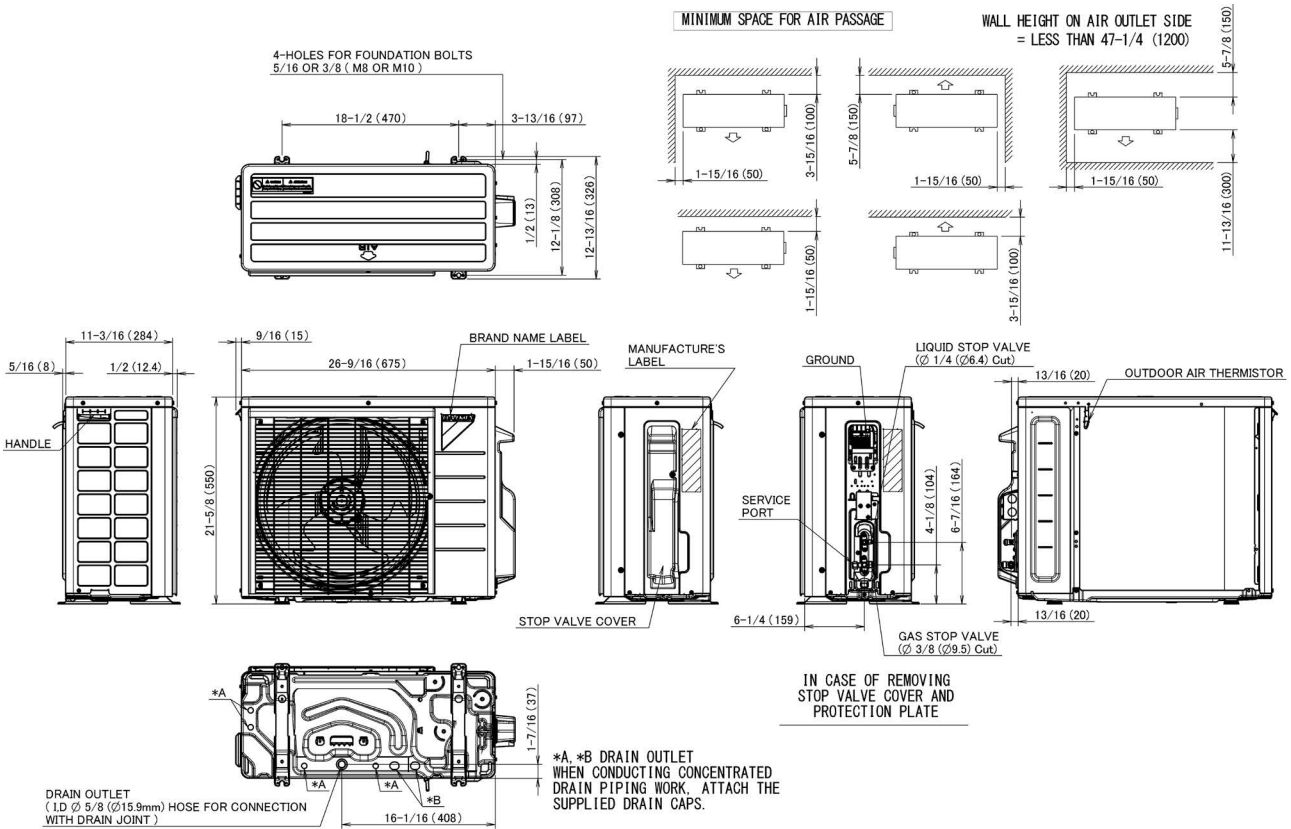
3D112918C

FDMQ15/18/24WVJU9



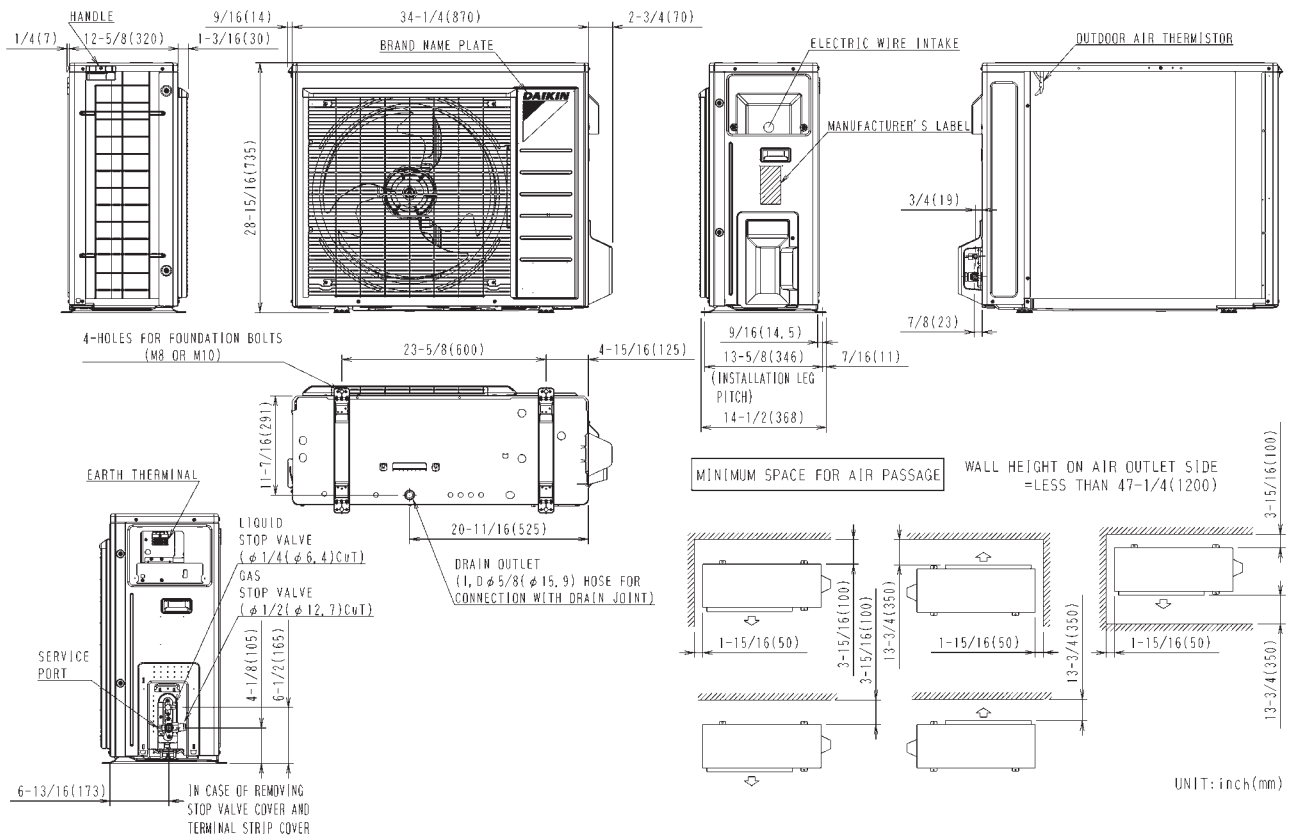
3D112919B

4.2 Outdoor Unit RX09/12WMVJU9



3D136777

RX15/18WMVJU9



3D092224D

11. Electric Characteristics

Indoor Unit	Outdoor Unit	Power Supply				Compressor	OFM			IFM		
		Hz - Volts	Voltage Range	MCA	MFA		RLA	Hp	W	FLA	Hp	W
FTXR09WVJUW9 FTXR09WVJUS9	RX09WMVJU9	60 Hz - 208 V 60 Hz - 230 V	Max. 60 Hz, 253 V Min. 60 Hz, 187 V	7.6	15	7.5	0.03	20	0.17	0.04	29	0.13
FTXR12WVJUW9 FTXR12WVJUS9	RX12WMVJU9	60 Hz - 208 V 60 Hz - 230 V	Max. 60 Hz, 253 V Min. 60 Hz, 187 V	7.7	15	7.5	0.03	20	0.17	0.04	29	0.19
FTXR18WVJUW9 FTXR18WVJUS9	RX18WMVJU9	60 Hz - 208 V 60 Hz - 230 V	Max. 60 Hz, 253 V Min. 60 Hz, 187 V	11.0	15	10.8	0.12	93	0.58	0.04	29	0.21
FDMQ09WVJU9	RX09WMVJU9	60 Hz - 208 V 60 Hz - 230 V	Max. 60 Hz, 253 V Min. 60 Hz, 187 V	8.0	15	7.5	0.03	20	0.17	0.17	130	0.49
FDMQ12WVJU9	RX12WMVJU9	60 Hz - 208 V 60 Hz - 230 V	Max. 60 Hz, 253 V Min. 60 Hz, 187 V	8.1	15	7.5	0.03	20	0.17	0.17	130	0.63
FDMQ15WVJU9	RX15WMVJU9	60 Hz - 208 V 60 Hz - 230 V	Max. 60 Hz, 253 V Min. 60 Hz, 187 V	8.6	15	8.0	0.10	75	0.47	0.31	230	0.64
FDMQ18WVJU9	RX18WMVJU9	60 Hz - 208 V 60 Hz - 230 V	Max. 60 Hz, 253 V Min. 60 Hz, 187 V	11.6	15	10.8	0.12	93	0.58	0.31	230	0.84
FDMQ24WVJU9	RX24WMVJU9	60 Hz - 208 V 60 Hz - 230 V	Max. 60 Hz, 253 V Min. 60 Hz, 187 V	13.1	20	12.0	0.12	93	0.58	0.31	230	1.10
FFQ09W2VJU9	RX09WMVJU9	60 Hz - 208 V 60 Hz - 230 V	Max. 60 Hz, 253 V Min. 60 Hz, 187 V	7.8	15	7.5	0.03	20	0.17	0.07	50	0.28
FFQ12W2VJU9	RX12WMVJU9	60 Hz - 208 V 60 Hz - 230 V	Max. 60 Hz, 253 V Min. 60 Hz, 187 V	7.8	15	7.5	0.03	20	0.17	0.07	50	0.28
FFQ15W2VJU9	RX15WMVJU9	60 Hz - 208 V 60 Hz - 230 V	Max. 60 Hz, 253 V Min. 60 Hz, 187 V	8.3	15	8.0	0.10	75	0.47	0.07	50	0.28
FFQ18W2VJU9	RX18WMVJU9	60 Hz - 208 V 60 Hz - 230 V	Max. 60 Hz, 253 V Min. 60 Hz, 187 V	11.0	15	10.8	0.12	93	0.58	0.07	50	0.28

Symbols:

MCA	: Min. circuit amps	(A)
MFA	: Max. fuse amps	(A)
RLA	: Rated load amps	(A)
OFM	: Outdoor fan motor	
IFM	: Indoor fan motor	
FLA	: Full load amps	(A)
W / Hp	: Fan motor rated output	(W, Hp)

Notes:

1. RLA is the max current that comes in cooling operation and heating operation.
2. Maximum allowable voltage variation between phases is 2%.
3. Select wire size based on the larger value of MCA.

C: 3D143137

C: 3D143129