

INSTALLATION MANUAL

Electric Heater Kit

MODELS:

FLEXX24HP230V1AH&BH
FLEXX36HP230V1AH&BH
FLEXX48HP230V1AH&BH
FLEXX60HP230V1AH&BH

Thank you for choosing our product.
Please read this Installation & Owner's Manual carefully before
operation and retain it for future reference.

If you lose this Manual, please contact your local distributor
visit www.greecomcomfort.com/resources now to download an
file the electronic version.



ATTENTION INSTALLING PERSONNEL

Prior to installation, thoroughly familiarize yourself with this Installation Manual. Observe all safety warnings. During installation or repair, caution is to be observed
It is your responsibility to install the product safely and to educate the customer on its safe use

CAUTIONS

- **ENSURE THAT ALL POWER IS DISCONNECTED PRIOR TO ATTEMPTING INSTALLATION OF THIS HEATER KIT. THERE MAY BE MORE THAN ONE DISCONNECT SERVICING THE UNIT.**
- **A MEANS OF STRAIN RELIEF AND CONDUCTOR PROTECTION MUST BE PROVIDED AT THE SUPPLY WIRE ENTRANCE INTO CABINET.**
- **USE COPPER CONDUCTORS ONLY**
- **INSTALLATION MUST FOLLOW NATIONAL ELECTRIC CODE AND OTHER APPLICABLE CODES**

IF THIS APPLIANCE IS INSTALLED IN AN ENCLOSED AREA SUCH AS A GARAGE OR UTILITY ROOM WITH ANY CARBON MONOXIDE PRODUCING APPLIANCE, ENSURE THE AREA IS PROPERLY VENTILATED

1. Remove the front panel and upper access panel from the air handler.



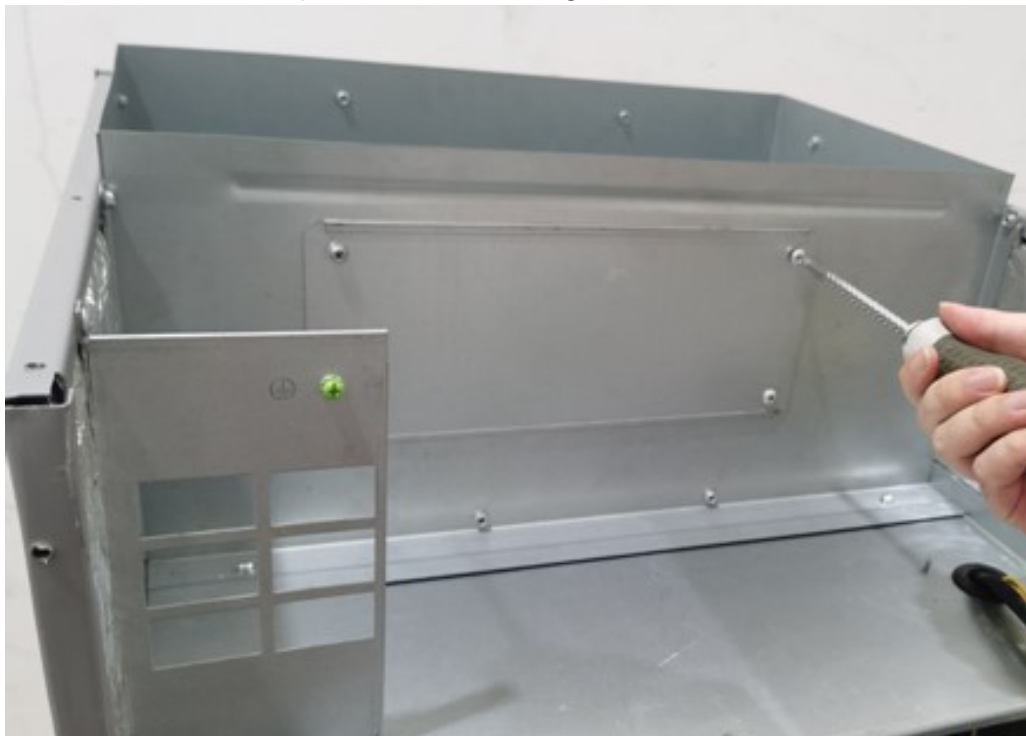
2. Disassemble the electrical box



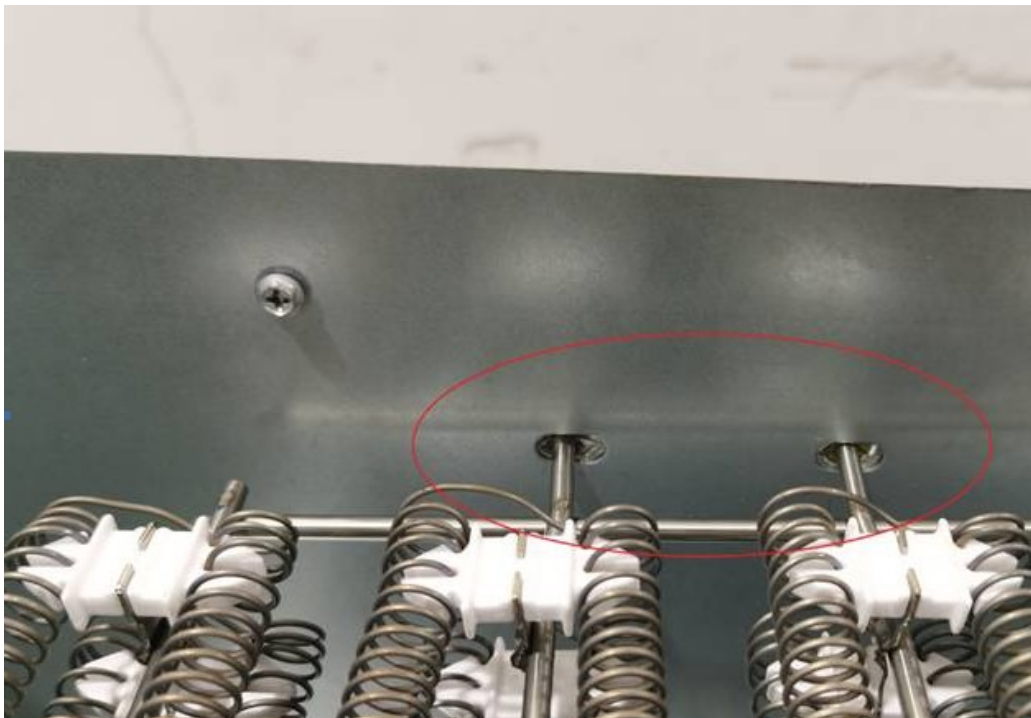
3. Remove the electrical box



4. Disassemble the metal plate at the mounting hole of the electric heater



5. Install the electric heater to the metal plate position which disassembles in step 4. (Notes: There are two holes circled below which are used to fasten the electric heater bracket during installation)



6. Install breaker (Notes: When installation, you need to lift up the buckle first, hold the breaker bracket and then put down the buckle to fix the breaker)



7. Connect the electric heater terminal



8. After installation, the schematic diagram is as follows:



9. Install the electrical box back to the original position



10. Install the front panel and upper panel back to the air handler. Electric heater installation is completed.

Electric Heater Kits

Model	Cooling capacity(ton)	Optional electric heater	
FLEXX24,36HP230V1AH OR BH	2.0 / 3.0	FLEXXHTR5KW	5
FLEXX24,36HP230V1AH OR BH	2.0 / 3.0	FLEXXHTR8KW	8
FLEXX36,48,60HP230V1AH OR BH	3.0 / 4.0 / 5.0	FLEXXHTR10KW	10
FLEXX48,60HP230V1AH OR BH	4.0 / 5.0	FLEXXHTR15KW	15
FLEXX48,60HP230V1AH OR BH	4.0 / 5.0	FLEXXHTR20KW	20



U.S. CONTACT INFORMATION TRADEWINDS, LLC

E-mail: info@twclimate.com

Contractor Support: 888-850-7928 | Mon-Fri 8 AM - 5 PM EDT

G R E E C O M F O R T . C O M